



Carrier Quality

Disruptive Pricing



Outdoor Wifi



Gigabit WiFi



Enterprise WiFi



Networking

airMAX™

Revolutionary MIMO TDMA
Protocol System



airMAX TDMA Protocol
airMAX M series Technology provides performance improvements in latency, throughput, & scalability compared to other outdoor systems in its class.



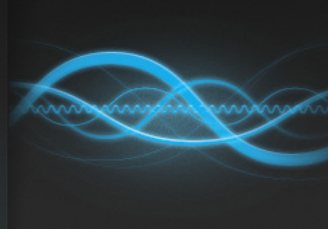
Powerful Software Features
Powered by Ubiquiti's powerful airOS loaded with features and optimizations for outdoor wireless performance, Ubiquiti's airMAX platform also features airView Spectrum Analysis and airControl central device management.



World Class Antenna Design
Ubiquiti's Antenna R&D team applied their years of experience in cellular basestation antenna design in developing the revolutionary airMAX.



Frequency Freedom
Ubiquiti offers airMAX systems for the 900MHz, 2.4GHz, 3GHz, 5GHz, 6GHz and 10GHz bands.



Wide Antenna Selection



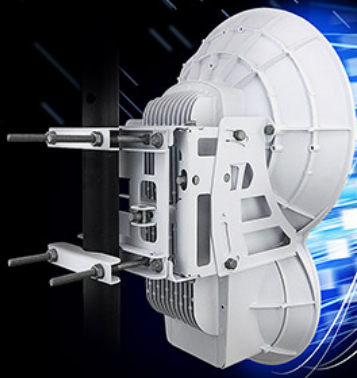
**low
LATENCY**

150 Mbps+
real throughput



Empowering Internet Connectivity for the Next Billion

airFiber™



Addressing the Under-served

airFiber core networks backbones can be instantly and cost-effectively deployed anywhere, bringing Internet deep into the unserved areas of the world.



Plug and Play Deployment

Utilizing the worldwide license-free 24GHz band, airFiber can be freely purchased and deployed nearly anywhere. Additionally, the product was designed to be instantly setup and configured.



Revolutionary Performance

With true 1.4Gbps+ data throughput and up to 13 km range, airFiber provides a breakthrough in 24GHz backhaul performance.



Hybrid Division Duplex (HDD)

HDD provides the best of both worlds — latency performance of Frequency Division Duplex (FDD) with the spectral efficiency of Time Division Duplex (TDD).

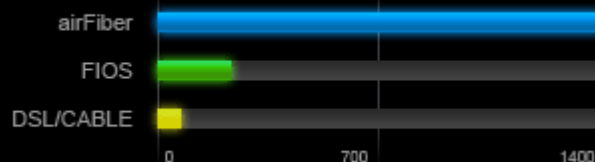


1.4 Gbps+
real throughput



2x2 MIMO

Speed comparison (Mbps)





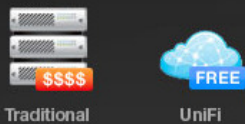
Unified WiFi Management Scale to thousands

UniFi is a revolutionary WiFi system which combines carrier class performance, unlimited scalability, disruptive pricing, and a virtual management controller.



Save money. Save time.

Unlike traditional enterprise WiFi systems utilizing a hardware WiFi Switch, UniFi uses a virtual client/server application that requires zero cost and no additional hardware.



Intuitive Software

Install, configure, and manage all of your UniFi Wireless Access Points with the intuitive and easy to learn UniFi User Interface.



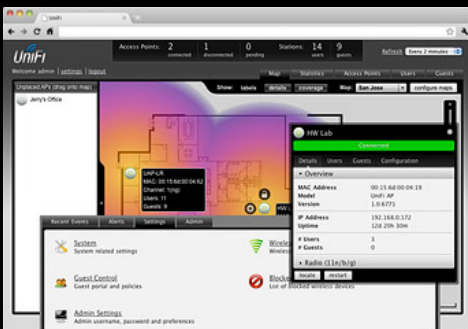
Powerful Hardware

UniFi Access Points feature the latest in WiFi 802.11n MIMO technology -- capable of 300Mbps speeds with ranges up to 500 ft.



Expandable

Unlimited Scalability. Build your wireless networks as small or big as you need. Start with one, expand to thousands.



Users and Guests

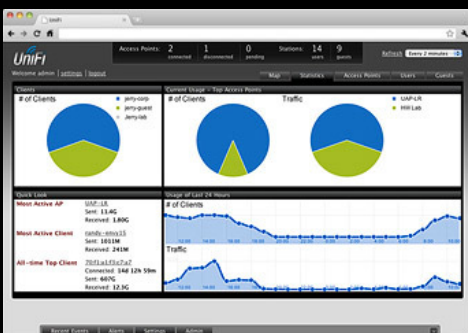
Keep track and control access of specific users and guests connected to your network(s).

Remote Firmware Upgrade

Save time and effort by remotely upgrading device firmware.

Guest Portal/Hotspot Support

Easy customization and advanced options for Guest Portals include authentication, Hotspot setup options, and the ability to run as an external portal server. Take advantage of UniFi's rate limiting for your Guest Portal and Hotspot package offerings. Apply different bandwidth rates (download/upload), limit total data usage, and limit duration of use. All UniFi APs include Hotspot functionality: Built-in support for billing integration using major credit cards via PayPal™. Built-in support for voucher-based authentication. Built-in Hotspot Manager for voucher creation, guest management, and payment refund. Full customization of Hotspot portal pages.



Google Maps™ Integration

Upload your own custom coverage maps or configure your map using the built-in Google Maps API.

Events and Alerts

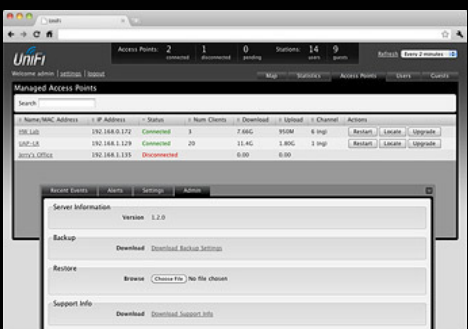
UniFi makes it easy to view and set up email delivery of alerts and recent event notifications on your network(s).

One UniFi Network

Option to create one large wireless network across multiple APs that lets users seamlessly roam.

L3 Manageability

With L3 manageability, the UniFi Controller software can be run on a different subnet than the UniFi APs it manages, allowing "no-touch" AP provisioning



EdgeMAX™

Advanced Routing Technology
for the Masses



Watch EdgeMAX video ▶

Breakthrough Price/Performance

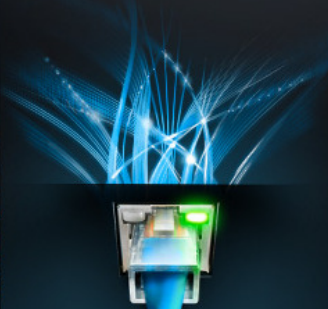
Starting at \$99 MSRP and 1million+
packet per second processing.

500X
MORE PACKETS
PER DOLLAR

byTolly tests

Powerful Functionality

Full-featured routing functionality for
limitless applications.



Advanced User Interface

Next-generation user experience
allows anyone to quickly become a
routing expert.



Carrier-Class Reliability

Uptime performance equivalent to
leading carrier and enterprise
solutions.



Accessories



TOUGH Cable



TOUGH Switch-PoE

Where to Buy

<http://ubnt.com>